

Subject

Corrosion of distance piece on SOx scrubber discharge water line

# ClassNK

## Technical Information

No. TEC-1205  
Date 9 April 2020

To whom it may concern

Recently, ClassNK has received several reports for incidents that sea water leakage was detected from distance piece attached to hull on SOx scrubber discharge water line (See Figure 1).

Until now, the leakages were detected at an early stage and did not cause heavy water ingress into E/R. However, ClassNK has concerns that similar incidents would occur in the future for the other vessels as well and may cause more serious accidents such as a large amount of leakage and water ingress into E/R, thus providing this Technical Information.

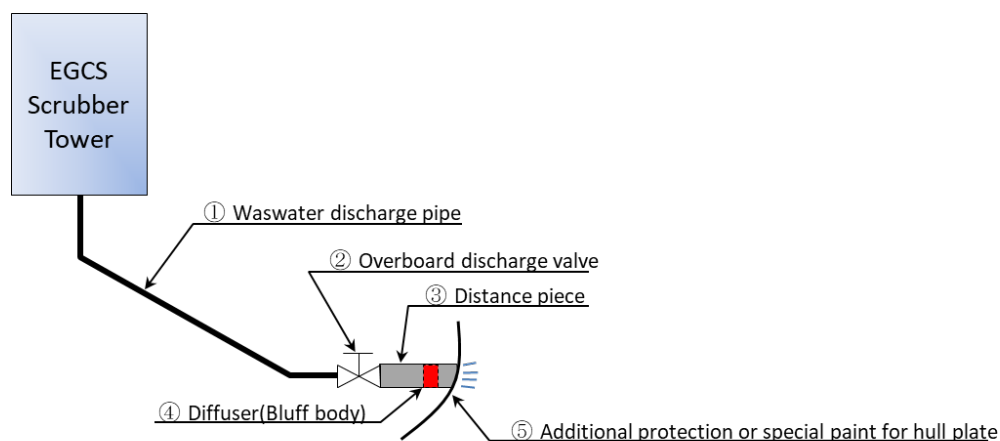


Figure 1 SOx scrubber discharge water line

Leakages have been detected around welds between "distance piece" and "flange (See Picture 1) or bluff body (See Picture 2)".

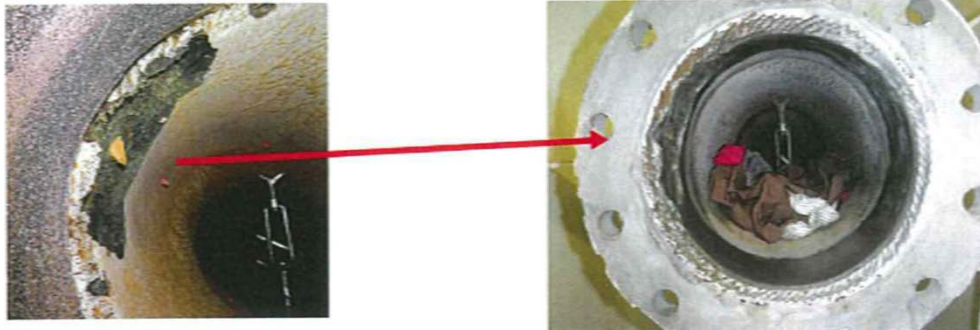
Having inspected the distance pieces internally, the corrosion occurred/progressed around the welds and caused the leakages finally.

In some cases, the progress of corrosion which has not resulted in leakage yet was found around the same welds.

(To be continued)

#### NOTES:

- ClassNK Technical Information is provided only for the purpose of supplying current information to its readers.
- ClassNK, its officers, employees and agents or sub-contractors do not warrant the accuracy of the information contained herein and are not liable for any loss, damage or expense sustained whatsoever by any person caused by use of or reliance on this information.
- Back numbers are available on ClassNK Internet Homepage (URL: [www.classnk.or.jp](http://www.classnk.or.jp)).



Picture 1 Corrosion around weld between distance piece and flange



Picture 2 Corrosion around weld between distance piece and bluff body

Upon the above incidents, ClassNK would like to recommend the owners and the managers as follows:

- To inform the above incidents of the masters of your vessels on which SO<sub>x</sub> scrubber is installed and instruct them to inspect the discharge water lines especially around the distance pieces externally from E/R with more attentions and frequencies.
- To inspect the distance pieces internally when there is an opportunity of arranging a diver for hull cleaning, etc.

If a leakage were detected, temporary countermeasure to stop it (e.g. covering the distance piece with cement box) should be taken immediately, and Occasional Survey by the surveyor should be arranged as soon as possible.

For any questions about the above, please contact:

NIPPON KAIJI KYOKAI (ClassNK)  
Survey Department, Administration Center Annex, Head Office  
Address: 3-3 Kioi-cho, Chiyoda-ku, Tokyo 102-0094, Japan  
Tel.: +81-3-5226-2027  
Fax: +81-3-5226-2029  
E-mail: svd@classnk.or.jp